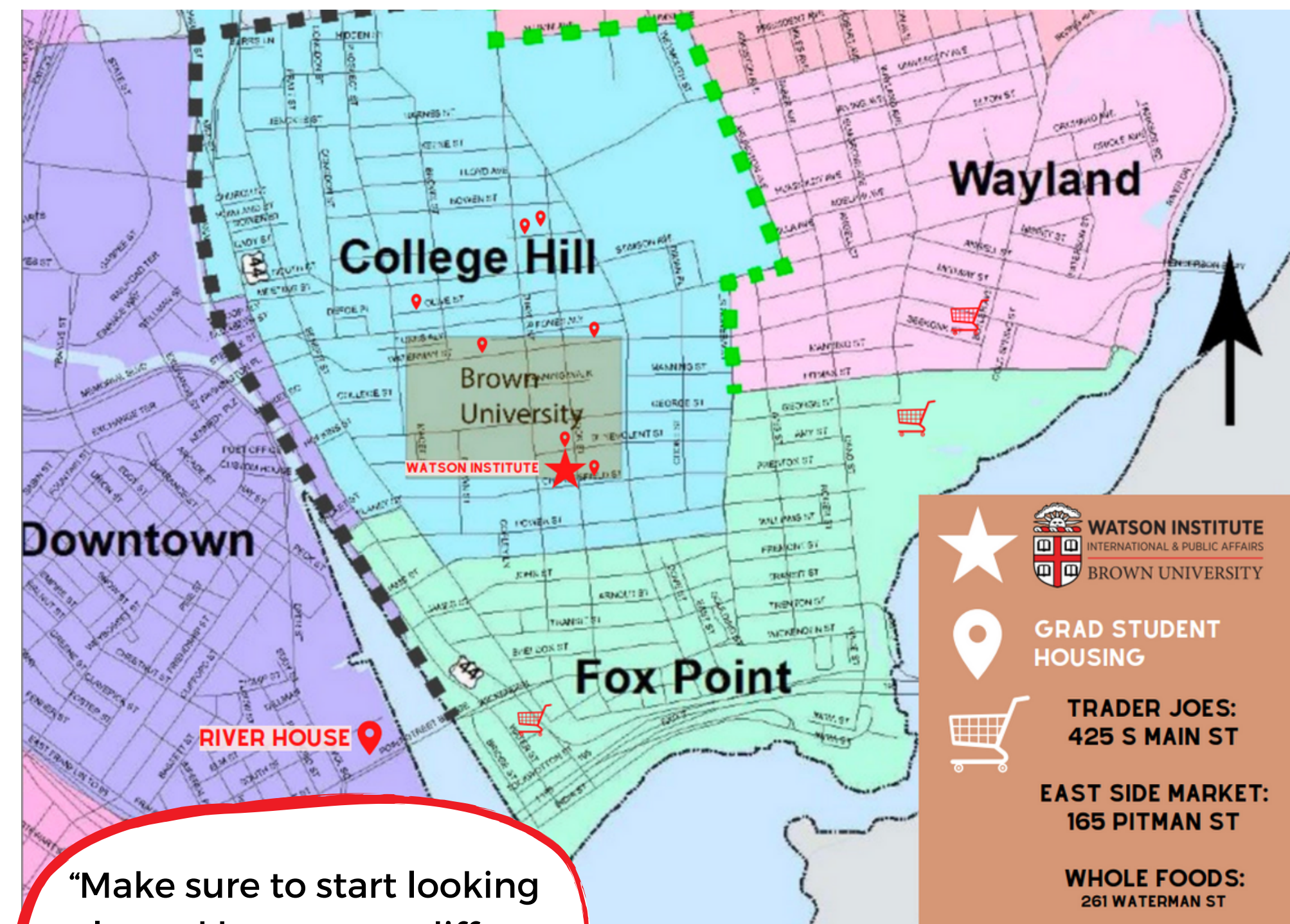


# MPA HOUSING GUIDE

EVERYTHING YOU NEED TO KNOW...



## Neighborhoods Around Brown



“Make sure to start looking early, and be open to different neighborhoods”  
- Farren Fuquea MPA '24

## THINGS TO CONSIDER...

### WAYLAND SQUARE

- Close to two grocery stores
- 15 minute walk to campus center
- Near shopping, restaurants, and cafes

### COLLEGE HILL

- Closest to campus amenities
- Near Thayer Street
- Busier area with lots of students

### FOX POINT

- Wickenden Street
- Near Trader Joe's
- Potentially uphill walk to campus

### DOWNTOWN

- Far from Campus
- More housing and apartment options
- Less of college/graduate feel

### FINANCES LINKS

- [Brown's Financing Worksheets](#)
- [Brown Financial Aid Basics](#)
- [Grad Budgeting Calculator](#)

### AVERAGE COHORT RENT RANGE:

**\$600-\$1,800**

\*depending on individual preferences

### BROWN MONTHLY

#### ESTIMATED EXPENSES

- Rent and Utilities: \$1,430
- Food and Groceries: \$660
- Transportation: \$100
- Books and Supplies: \$135
- Personal Expenses: \$310

## BROWN UNIVERSITY DINING

Meal Credits allow you entry into the following all-you-care-to-eat dining halls:

- Sharpe Refectory, Andrews Commons, Verney-Woolley, and Josiah's.

Flex Points and cash can be used at:

- Blue Room, Ivy Room, Gourmet-to-Go, and Engineering Cafe

List of Meal Plans and eateries can be found via [Brown Dining's website](#)

## DINING ALTERNATIVES

Brown offers a variety of [food options/resources](#):

- [GSC-Sponsored Brown Market Shares Produce](#)
- Bear Market Food Exchange Pantry: pantry shelf stocked by donations of non-perishable goods
- Brown's [“Free Food” GroupMe Channel](#)

[On-Call Shuttles](#) also do pick-ups and drop-offs at a number of food/grocery stores:

- East Side Marketplace, Whole Foods, Stop & Shop, Trader Joe's, Walmart

[RIPTA](#) buses are also free to all Brown ID Card Holders!

# HOUSING OPTIONS

## GUIDANCE ON SECURING HOUSING

### BROWN VS. PRIVATE HOUSING



#### Campus Housing:

Brown University offers a variety of campus housing options:

- River House Apartments
- Auxiliary Housing
- Graduate Housing

#### Private Housing:

Often found through Facebook groups or via online websites, private housing is another option for students.

See options below:

#### PRIVATE HOUSING OPTIONS

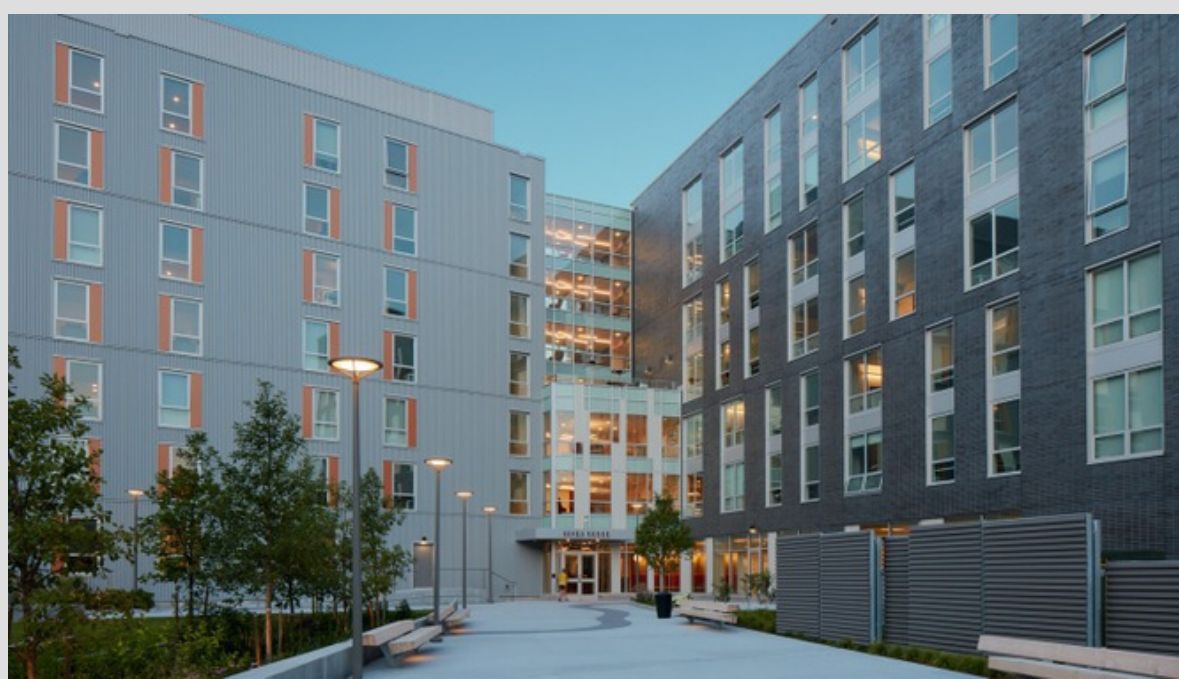
##### • **Private Housing Rentals - Apartments, Rooms, Etc.**

- Samson Realty
- Residential Properties
- Compass Realty
- RentPro
- Seaflower Property Group

#### FACEBOOK GROUPS

- Brown University Off-Campus Housing
- Brown Off-Campus Housing for Grad Students
- Brown Housing, Sublets, and Roomates
- Housing for Brown, RISD, J&W and Providence Young Professionals

#### RIVER HOUSE



\*One of the popular housing options for graduate students (but there are others as mentioned above)

#### SECURING HOUSING

- Upon admission to the MPA, join the River House waitlist (immediately)
- Call River House to inform them that you have an early move-in date
- Various unit layouts available: choose between singular studio, two bedroom, and three bedroom (cost varies)

#### CONSIDERATIONS

- 7 minute walking distance to Trader Joes
- 20 minute walk to College Hill and Watson Institute
- Short walking distance to locations in Downtown Providence
- The shuttle bus daily - 7 days of the week
- Can be a bit inaccessible if you are unable to walk frequently.

### MPA STUDENT AMBASSADOR ADVICE

Vanessa Booth MPA '24

*"Begin your search for housing early and join the Brown University facebook housing group!"*

Farren Fuquea MPA '24

*"It can be a stressful time with moving to a new city, starting classes, and getting settled but just know it is going to be such a great experience!"*

Jessica Saenz Gomez MPA '24

*"If you experience landlord troubles during your transition to Brown, contact Brown's Attorney Peter J. Cerilli!"*  
Legal Services